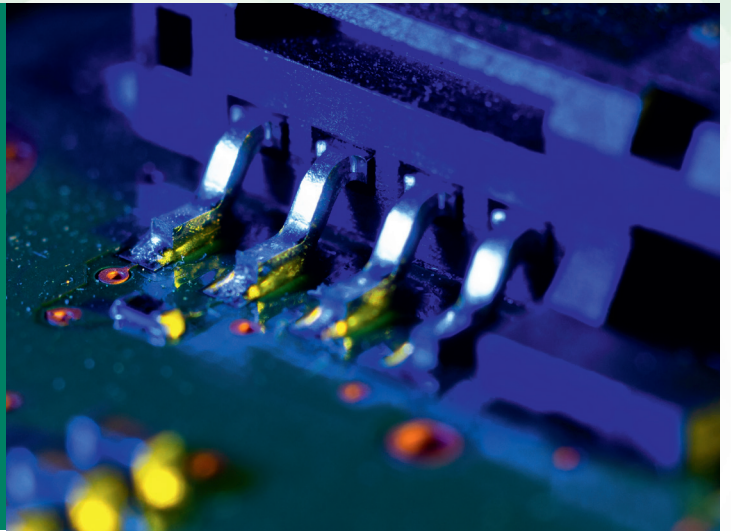


APPLICATION SHEET

INSULATION



Lightning impulses (1.2/50 μ s) are used to test for insulation breakdown through air (clearance) or over materials (creepage). Voltage withstand and insulation breakdown tests are required for practically everything connected to AC or DC power. The aim is to ensure a product is safe to use in the application and by domestic products to protect the users from electrical shock. EMC PARTNER have a range of impulse insulation testing equipment up to 144 kV.

Test types

- › 1.2/50 μ s Voltage Impulse for Clearance
- › 1.2/50 μ s Voltage Impulse for Creepage

Standards

- › IEC 60664-1
- › IEC 60060-1
- › IEC 61180-1
- › IEC 60335
- › IEC 60950

MIG1203



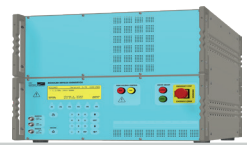
1.2/50 μ s lightning impulse generator up to 12 kV with 40 Ohm impedance. High voltage outputs on top plate protected by TC-ST test cabinet.

MIG14403



User configurable modular design from 72 kV to 144 kV in 24 kV stages. High voltage output on contacting ring. Separate control unit with integrated voltage and current dividers. Mounted on wheels for easy placement.

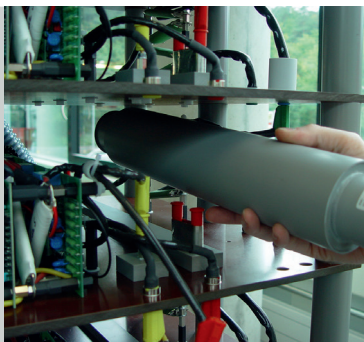
MIG2403



1.2/50 μ s lightning impulse generator up to 24 kV with 40Ohm impedance. High voltage outputs on top plate protected by TC-ST test cabinet.

MORE OPTIONS & COMFORT

EMC PARTNER impulse generators can be extended to meet different impedance or impulse energy requirements for a wide variety of applications ranging from electrical circuits to distribution transformers.



APPLICATION
INFORMATION