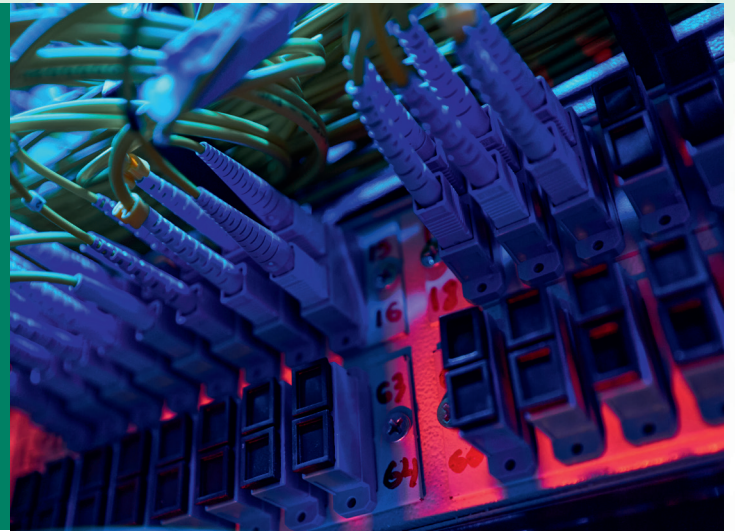


## APPLICATION SHEET

# SYMMETRICAL DATA LINES



As devices become increasingly interactive, practically everything has a communication interface of some sort. RS485 and Ethernet® have become industry standards allowing fast data transfer over long distances. Testing can be performed on active systems up to 1 Gb/s communication rate. Balanced or twisted pair communication has the advantage that it is not susceptible to disturbance signals, even over long distances. CE testing using the combination wave/surge and ringwave impulses is required for products having this interface type.

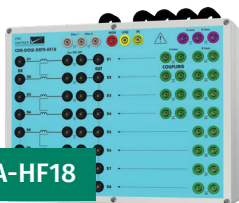
### Test types

- › Combination Wave
- › 100 kHz Ringwave
- › 100kHz & 1MHz Damped Oscillatory Waves

### Standards

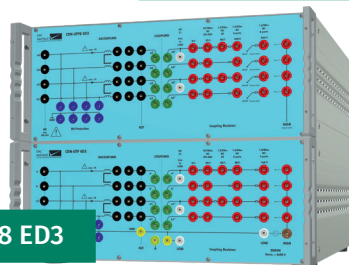
- › IEC 61000-4-5
- › IEC 61000-4-12
- › IEC 61000-4-18

#### CDN-DOW-DATA-HF18



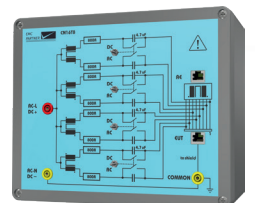
Coupling and Decoupling Network for IEC 61000-4-18. Test with 100 kHz and 1 MHz DOW onto 4 twisted pair (8 lines) with data rates up to 1 GB/s.

#### CDN-UTP8 ED3



CDN-UTP8 ED3 is a compact manually operated coupling devices with a high degree of flexibility enabling testing for many standards. Combination Wave Generators (CWG) for IEC 61000-4-5, Ringwave generators to IEC 61000-4-12 and 10/700 telecom generators according to ITU-T K44 can all be used.

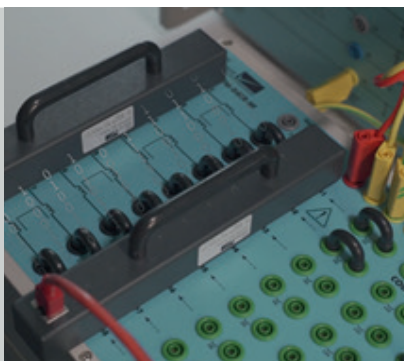
#### CN-16T8



Coupling and Decoupling Network for IEC 61000-4-16. Test with short or continuous disturbances onto 4 twisted pair (8 lines) with data rates up to 1 GB/s.

### MORE OPTIONS & COMFORT

Offering a complete solution means thinking about the test process from a customer perspective. EMC PARTNER have adapters for all symmetrical line coupling networks enabling direct connection of RJ45 cables. Reducing test time and the possibility for errors.



### TEMA3000 - SOFTWARE TEST SUITE

The ideal solution for our latest test generators.

Create and manage Tests and Sequences. Integrate DSO measurements in professional reports. Import and export Test Setups and Sequences. Smart test functions and predefined Test Library.



APPLICATION  
INFORMATION